

MONTHLY MEMBERSHIP PROGRESS REPORT

LOCATION IOWA

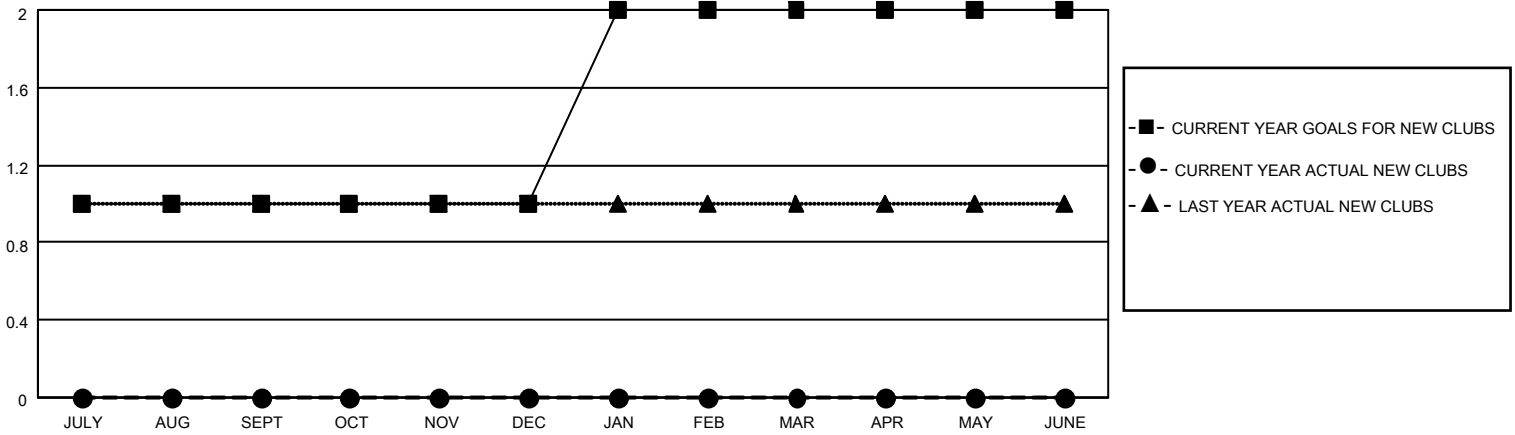
District 9 SW

Results as of: 2/28/2023

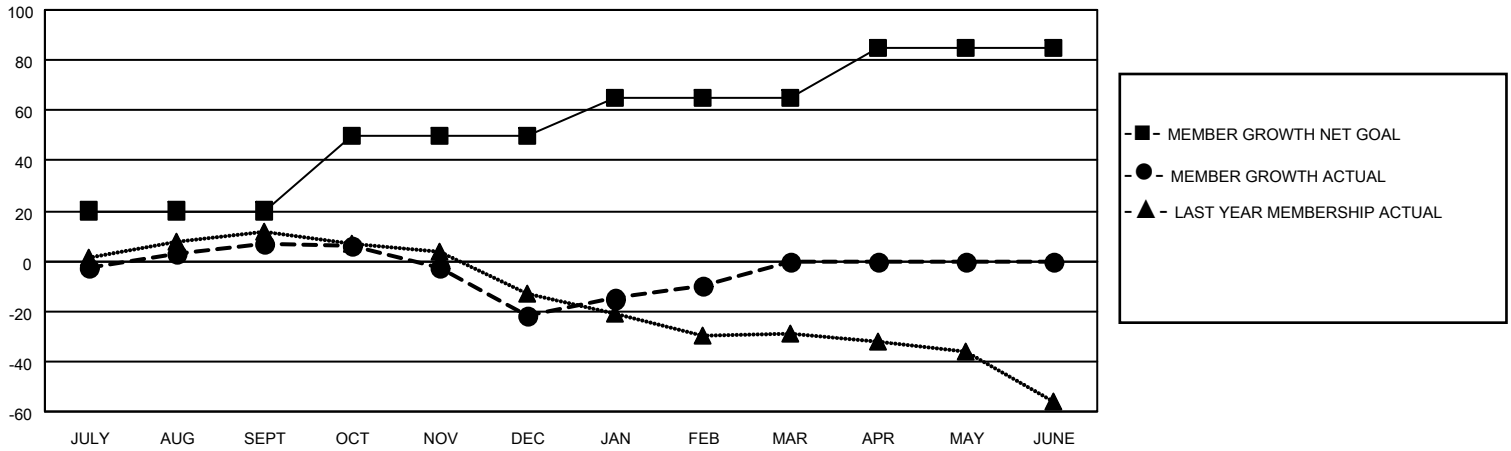
Clubs			
RESULTS FOR 2022-2023			
QUARTER	NEW CLUB GOAL	NEW CLUBS	DROPPED CLUBS
JULY/AUG/SEPT	1	0	0
OCT/NOV/DEC	0	0	0
JAN/FEB/MAR	1	0	1
APR/MAY/JUNE	0	0	0

Members			
RESULTS FOR 2022-2023			
QUARTER	MEMBER GROWTH NET GOAL	MEMBER GROWTH ACTUAL	DROPPED MEMBERS ACTUAL (including transfers)
JULY/AUG/SEPT	20	38	27
OCT/NOV/DEC	30	23	50
JAN/FEB/MAR	15	20	8
APR/MAY/JUNE	20	0	0

GOALS AND ACTUAL NEW CLUBS CUMULATIVE



GOALS AND ACTUAL MEMBERS CUMULATIVE



DROPPED CLUBS: 1	
<u>DROPPED MEMBERS</u>	
DECEASED	9
CLUB CANCELLED	0
OTHER	76
TOTAL	85

29 CLUBS OF 52 ADDED 1 OR MORE NEW MEMBERS

[CLICK HERE FOR CUMULATIVE MEMBERSHIP DATA](#)

<u>GENDER DISTRIBUTION</u>	
MALE	823 (65.89%)
FEMALE	426 (34.11%)
NON BINARY	0 (0.00%)
PREFER NOT TO ANSWER	0 (0.00%)
TOTAL FAMILY UNIT MEMBERS 403	
FAMILY MEMBERS PAYING HALF DUES 207	